

Club Med Tomamu Hokkaido

Ride a different wave



Tomamu
Hokkaido

Club Med 
amazing you



Ride a Different Wave

Live Vibrant

Sprawled across over 145 hectares of Tomamu Mountain, Club Med introduces a thrilling summer escape where boundless activities are just waiting for discovery. Live in harmony with Mother Nature and be at one with your body.

Travel Trendy

Document and share amazing snippets of your journey here with us to your friends and family. Take the most wanderlust Instagram-worthy photos anytime, anywhere.

Become an Insider

Fully immerse yourself in culture of Japan. Learn the country's way of life, its customs, and its ways of being. Fresh seafood, premium Wagyu beef, and award-winning locally brewed spirits make this more than a destination to discover.





Reasons why we love Club Med Tomamu Hokkaido

- Trendiest resort in Hokkaido
- Largest indoor wave pool in Japan



The art of ALL-INCLUSIVE

- Premium accommodation from Superior Rooms to Suites
- Gourmet full-board, various restaurants & all day snacks
- Open bar with a selection of spirits, wines, beers and non-alcoholic drinks
- A wide range of sports & activities
- Family and kids offer - Mini Club, Passworld (closed at the moment), Amazing Family!
- Evening entertainment (live band & shows)
- Exclusive Personalized services
- Return Flights and resort transfers - option



+



+



+



+



=

all
inclusive

✓ Children's Club 4-17 y/o

✓ Full-board Gourmet Cuisine

✓ Bar & Snacking

✓ Sports & Activities

✓ Day & Night Entertainment

Learn more >



How to get there

The nearest airport to Club Med Tomamu is New Chitose International Airport and Tokachi-Obihiro Airport.

Option - Transfer to the resort is included in your package and takes approximately 1 hour 30 minutes from New Chitose Airport and 1 hour 20 minutes from Obihiro Airport





Tomamu
Hokkaido

Discover What's New at Club Med Tomamu Hokkaido in 2020



Rediscover all the 2020 novelties in Club Med Tomamu Hokkaido



Hokkaido Cooking Classes

- Making of Temari Sushi
- You can opt to have your decorative treats on the spot, or have them served during dinner.
- Bring the skill back home
- Reserve your spot early





Tomamu
Hokkaido

Rooms & Facilities





Superior Room

As soon as you step into your room, you're enveloped by the snug, cozy atmosphere created by fitted carpets and wooden furniture. These upstairs rooms are ideal for a couple or family

- 38 sqm
- Occupancy: 2

Services included

- + Minibar (non provisioned)
- + Luggage service
- + Concierge service
- + Inclusive of room service for continental breakfast

Additional Services available:

- + Laundry service (extra charge)
- + Dry cleaning service (extra charge)

Family Superior Room – Mountain view

A sophisticated atmosphere, contemporary decor and a mountain view make this room extra special. It has everything you need for an unforgettable family holiday.

- 38 sqm
- Occupancy: 4
- Child Age Limit: 11 years old

Services included

- + Minibar (non provisioned)
- + Luggage service
- + Concierge service
- + Inclusive of room service for continental breakfast

Additional Services available:

- + Laundry service (extra charge)
- + Dry cleaning service (extra charge)

Junior Family Superior Room

Spacious and comfortable, this room is ideal for a couple travelling with a child. Soft lighting and a wooden headboard soften the feel for a cosy atmosphere

- 42 sqm
- Occupancy: 3

Services included

- + Minibar (non provisioned)
- + Luggage service
- + Concierge service
- + Inclusive of room service for continental breakfast

Additional Services available:

- + Laundry service (extra charge)
- + Dry cleaning service (extra charge)



Superior rooms

Family Superior Rooms

Practical and comfortable, this room is perfect for families. The sleek lines of the furniture create an uncluttered look. Carefully chosen materials and colors ensure it still feels snug

- 38 sqm
- Occupancy: 4
- Child Age Limit: 11 years old

Services included

- + Minibar (non provisioned)
- + Luggage service
- + Concierge service
- + Inclusive of room service for continental breakfast

Additional Services available:

- + Laundry service (extra charge)
- + Dry cleaning service (extra charge)

Master Family Superior room

For family holidays that combine space, relaxation and comfort, this is the ideal room. Situated on the 2nd, 3rd, 4th or 5th floor, it has lots of natural light and sky blue walls.

- 64 to 71 sqm
- Occupancy: 5
- Child Age Limit: 11 years old

Services included

- + Minibar (non provisioned)
- + Luggage service
- + Concierge service
- + Inclusive of room service for continental breakfast

Additional Services available:

- + Laundry service (extra charge)
- + Dry cleaning service (extra charge)

Superior room – Mobility Accessible

Located on the 2nd or 3rd floor, your room has specialised facilities for people with reduced mobility. This chic retreat is extremely comfortable

- 38 sqm
- Occupancy: 2

Services included

- + Minibar (non provisioned)
- + Luggage service
- + Concierge service
- + Inclusive of room service for continental breakfast

Additional Services available:

- + Laundry service (extra charge)
- + Dry cleaning service (extra charge)



Superior room

Interconnecting Junior Family Superior room

This spacious accommodation has two bedrooms and a lounge area, making it perfect for families or couples travelling together. This room configuration is comfortable and relaxing for everyone.

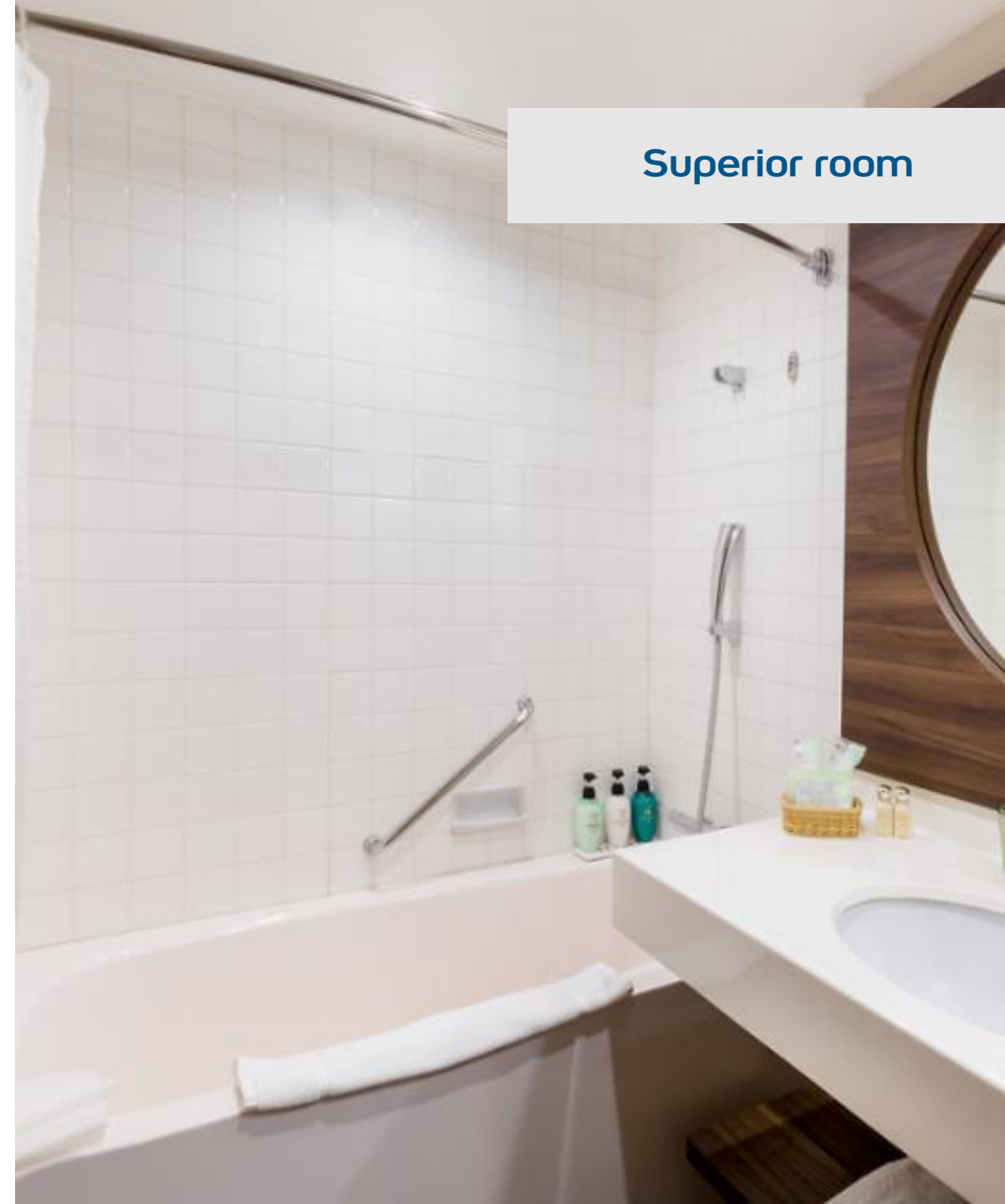
- 42×2 sqm
- Occupancy: 6

Services included

- + Minibar (non provisioned)
- + Luggage service
- + Concierge service
- + Inclusive of room service for continental breakfast

Additional Services available:

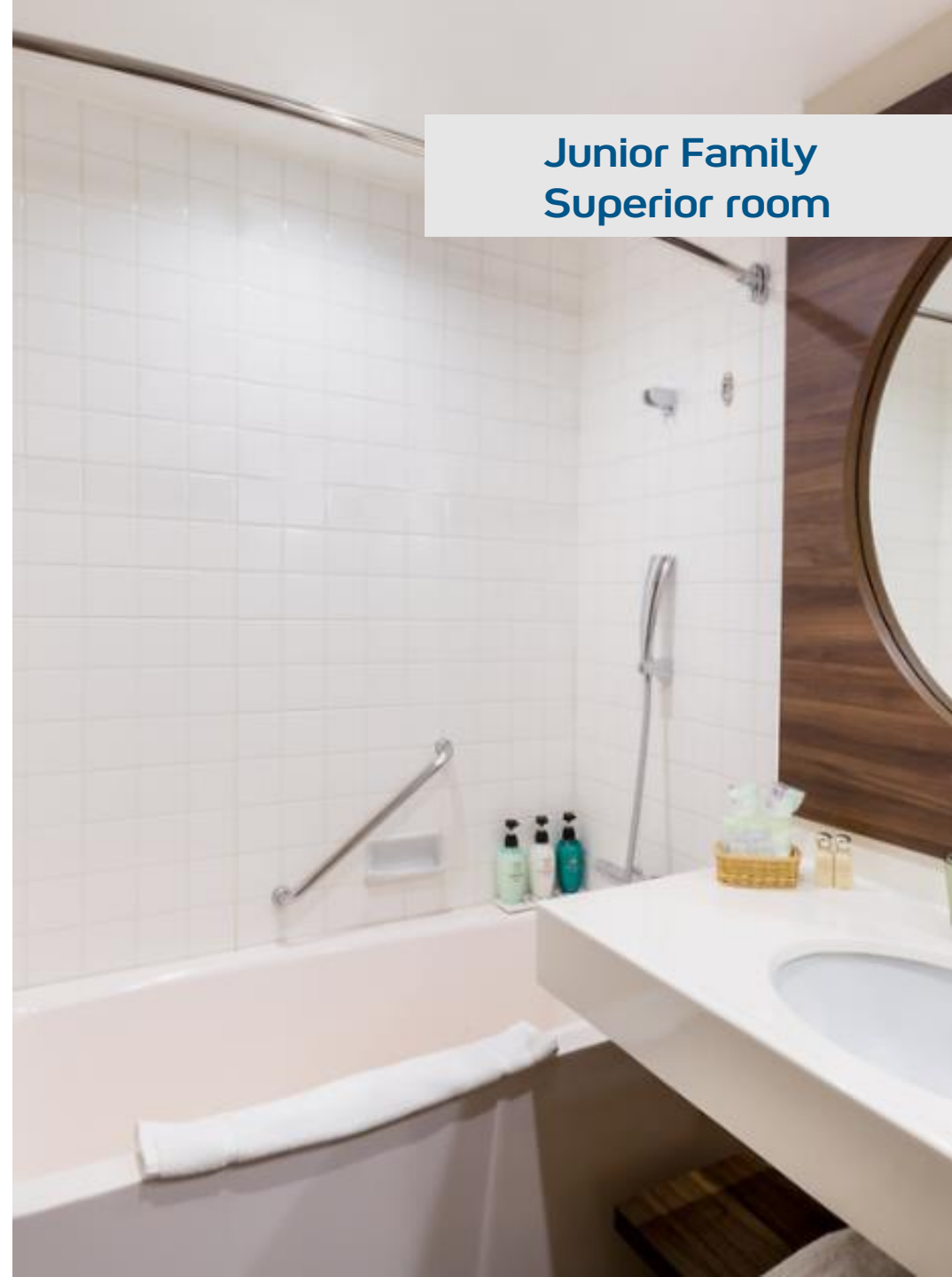
- + Laundry service (extra charge)
- + Dry cleaning service (extra charge)



Superior room



**Family Superior room
Mountain view**



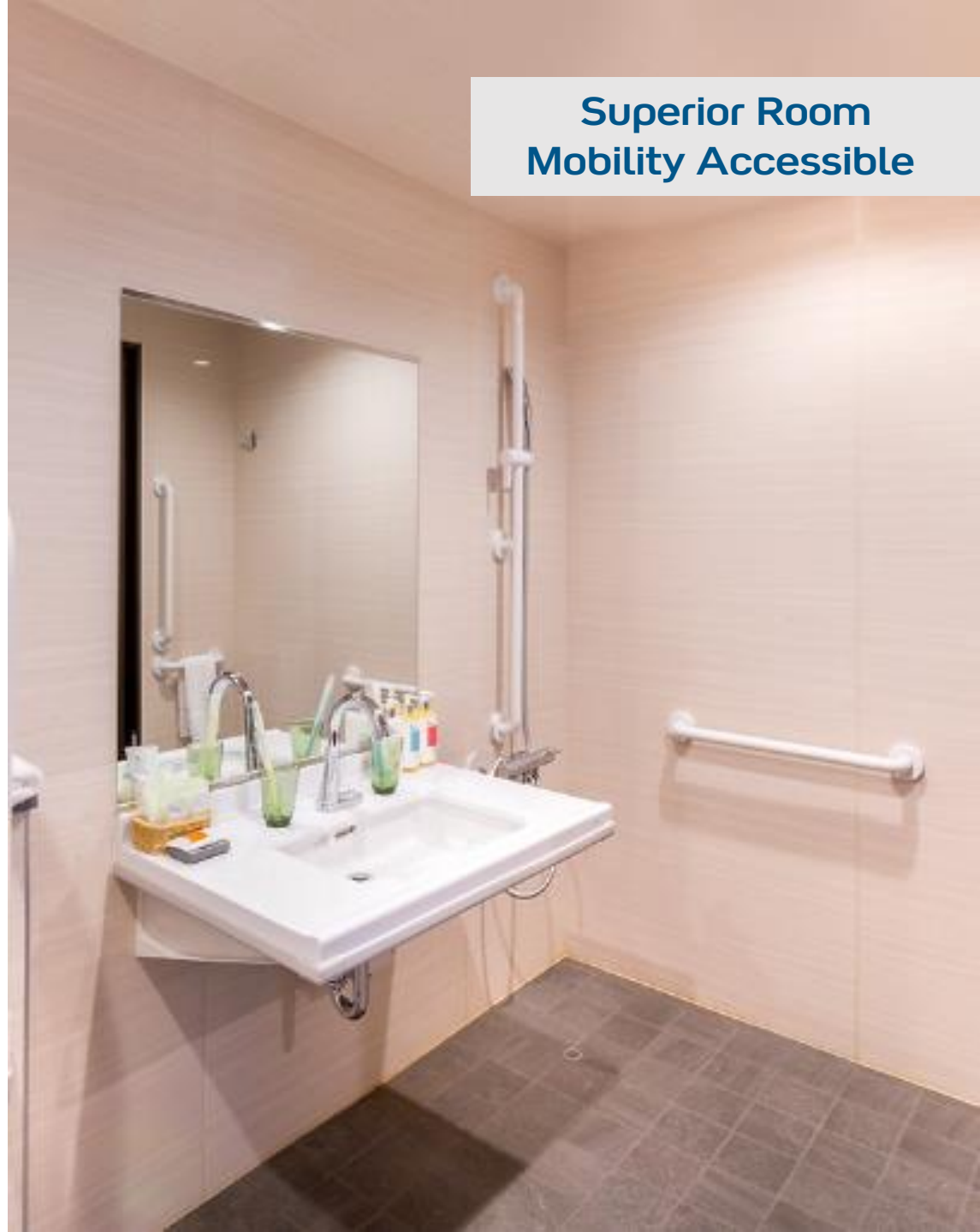
**Junior Family
Superior room**



Master Family Superior Room



**Superior Room
Mobility Accessible**





Deluxe rooms

Deluxe room – Forest view

With generous dimensions and a mountain view, this room is a favourite with families looking for extra space. Situated on the upper floors, anyone who loves the landscape will feel at home here.

- 38 sqm
- Occupancy: 3
- Child Age Limit: 11 years old

Services included

- + Minibar (non-alcoholic drinks) - refilled weekly
- + Pool Towel
- + Luggage service
- + Inclusive of room service for continental breakfast

Additional Services available:

- + Laundry service (extra charge)
- + Dry cleaning service (extra charge)



Deluxe room



Family Suite

Loft-style living in the mountains. This Suite is lovely and large if you're travelling with your family. Chic and contemporary, it has sweeping views over the mountains

- 55 sqm
- Occupancy: 5
- Child Age Limit: 11 years old

Extra services included:

- + Luggage service in room
- + Minibar (nonalcoholic drinks) - refilled daily
- + Inclusive of room service for continental breakfast
- + Turn down service
- + Cleaning on demand
- + Private transfer for G.M® with transfer package

Additional Services available:

- + Laundry service (extra charge)
- + Dry-Cleaning service (extra charge)

Master Family Suite - Mountain View

Families who want both inside and outside space will enjoy this pair of rooms. The decor is a charming, welcoming blend of the modern and the authentic

- 72 sqm
- Occupancy: 5
- Child Age Limit; 11 years old

Extra services included:

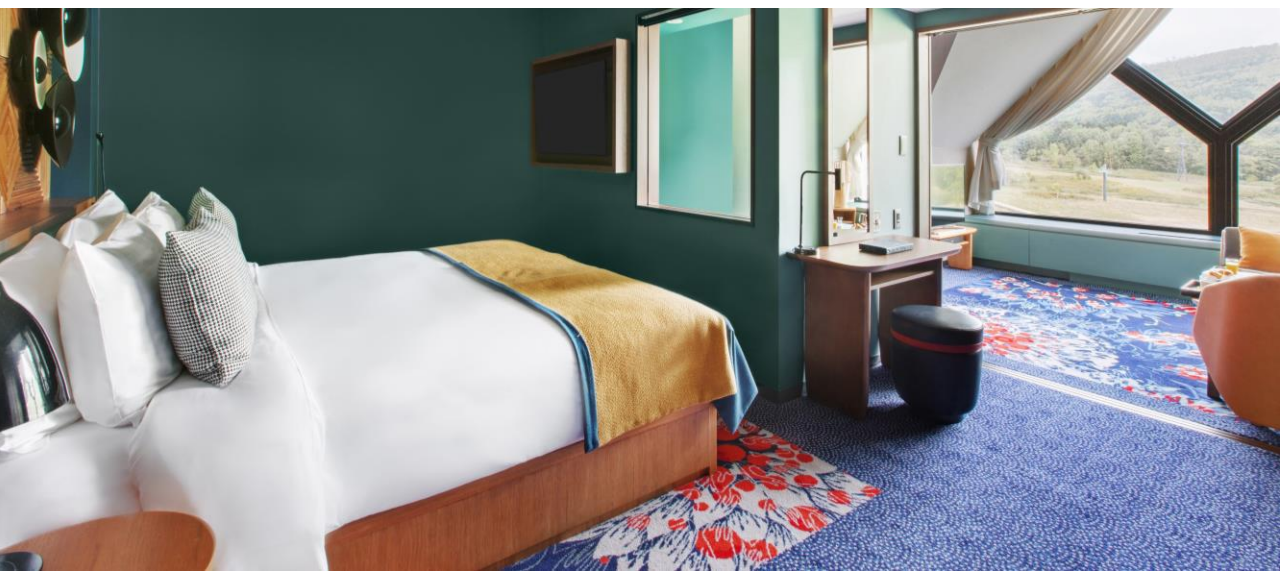
- + Luggage service in room
- + Minibar (nonalcoholic drinks) - refilled daily
- + Inclusive of room service for continental breakfast
- + Turn down service
- + Cleaning on demand
- + Private transfer for G.M® with transfer package

Additional Services available:

- + Laundry service (extra charge)
- + Dry-Cleaning service (extra charge)



Master Family Suite



Family Suite



Tomamu
Hokkaido

Restaurants & bars





Restaurants

Social distancing and mask are mandatory within these facilities



Itara

- Main restaurant
- 4 distinct spaces, each inspired by Hokkaido regions
- 940 seats inside
- Breakfast buffet: 7:00am - 9:30am
- Lunch buffet: 12:00pm - 2:00pm
- Late lunch: 2:15pm - 3:30pm
- Dinner buffet: 6:15pm - 8:45pm

Haku

This restaurant is temporarily closed.

- Specialty restaurant
- 136 seats inside
- Dinner: 6:00pm - 9:15pm
- the scent of fresh yakiniku steaming off the grill.





Unkai

- Opening hours : 10:00am - 12:00am
- Take in spectacular mountain vistas while music fills the air.
- Minimum drinking age in Japan is 20 years old.

The Nest

- Opening Hours :6:00pm - 12:00am
- "A la Carte" selection of small bites and a curated tea lesson
- bar's immersion into some of the best local whiskies and sakes





Tomamu
Hokkaido

Sports & Activities





MOUNTAIN BIKING



HOKKAIDO FLAVOURS COOKING CLASS

Must-try Experiences 1)



HOKKAIDO* COLOURS



FAMILY NATURE WALK



UNKAI TERRACE*

must-try Experience

#1 UNKAI TERRACE

At an elevation of more than 1,000m above sea level, Unkai Terrace offers the most spectacular view of a sea of clouds spreading on top of Hokkaido Mountains. Witness an unbelievable natural spectacle that you will never forget and enjoy every second of this ever-changing postal card scenery.



must-try Experience

#2 MOUNTAIN BIKING

Guided by our experienced G.Os, take to the mountain for an exhilarating adventure you won't soon forget. Enjoy a mountain biking adventure to ride scenic roadways or hike all the way to the top where views are endless. For a quiet, intimate French picnic amid scenic mountain landscapes, allow our G.Os to guide you on a trekking expedition to find the perfect spot

must-try Experience Ψ

#3 HOKKAIDO* COLOURS

Known for its vibrant fields of flowers, Hokkaido welcomes guests to take in the scents of summer at destinations including Farm Tomita and the scenic landscapes of Biei, all only moments away from our central location. Take a journey to the Blue Pond where natural minerals have created naturally stunning azure waters surrounded by dense forest.



must-try Experience Ψ

#4 FAMILY NATURE WALK

Explore nature's playground as a family - discover the local flora and fauna of Tomamu Hokkaido mountains together. This educational and fun eco trek by our G.O. will lead you on a journey surrounded by picturesque landscapes and endless greenery. Breathe in the fresh mountain air as you arrive at the flower-covered hillsides. Learn about the extensive wildlife and lush nature within the ideal summer temperature. A perfect occasion for the whole family to reconnect and go slow.

must-try Experience Ψ

#5 HOKKAIDO FLAVOURS COOKING CLASSES

Hokkaido buckwheat crepe or Nigiri Sushi; pick your favorite and immerse in a fun and tasty step-by-step cooking class conducted by our professional Chef. Create mouthwatering Hokkaido dishes and amaze your whole family.

Want to share this moment with your little ones? Join the Amazing Family cooking class and learn how to make adorable Cartoon Character sushi rolls together - a healthy dish with local vegetables, eggs and seafood.





Sports & Activities

Social distancing and mask are mandatory within these facilities

Land Sports:

- Yoga
- Fitness
- Mountain Biking
- Table Tennis
- Table Pool
- Archery
- Flying trapeze
- Horse riding*
- Bocceball
- Hiking*
- Weight and cardio room

Water Sport:

- Whitewater sports*





Children's Clubs & Services

Social distancing and mask are mandatory within these facilities

Children's Clubs:

- Petit Club Med: 2 to 3 years old
- Mini Club Med: 4 to 10 years old
- Junior Club Med: 11 to 17 years old

Children's Services:

- Club Med Baby Welcome: from birth to 23 months

Children's Activities:

- Petit circus: 4 to 6 years old
- Petit Golf: 4 to 5 years old
- Petit Tennis: 3 to 4 years old





Pool

MAIN SWIMMING POOL

Ready to dive in Mina Mina beach,
Japan's largest indoor wave?
Head for the swimming pool

**Closed April-May and
October-November.*



Operated by Hoshino Resorts Tomamu

- Themed nights
- Lounge & festival evenings
- Parties & Dancing
- Theater shows





Excursions*

Social distancing and mask are mandatory within these facilities

- Fishing
- Unkai terrace



*Additional cost may apply



Tomamu
Hokkaido

Meetings & Events
by Club Med



Design a unique corporate trip with our premium resort offerings and lush, beautiful nature surroundings for memorable team bonding activities.

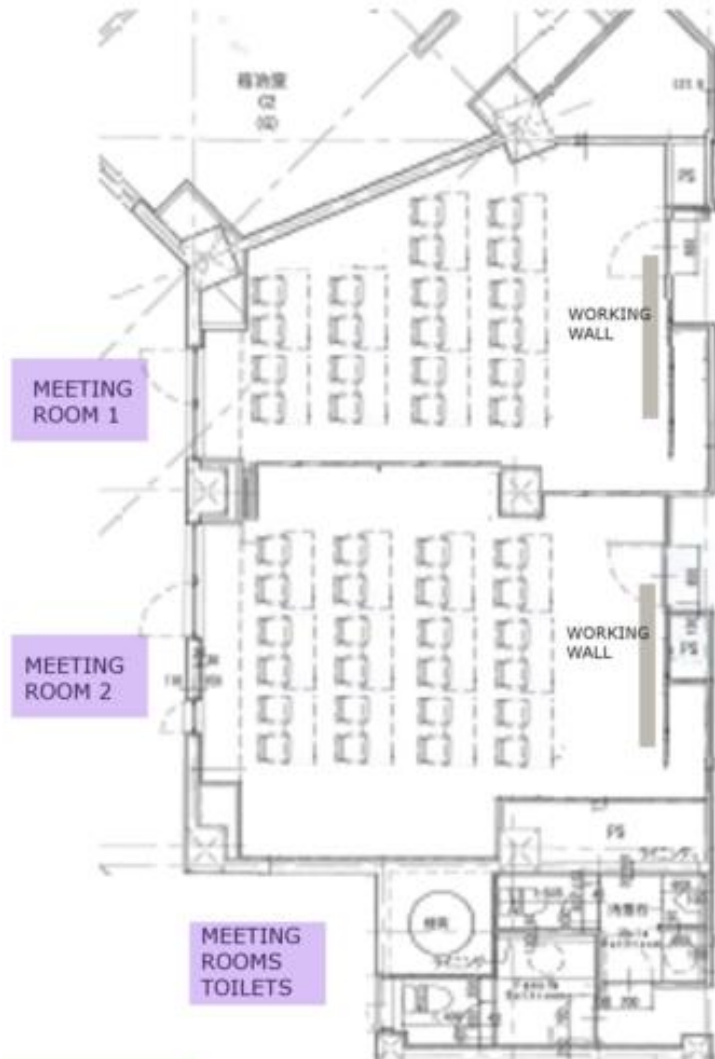


New Conference Centre

Club Med Tomamu Hokkaido's new conference centre will help enhance the creativity of your team. The concept was designed to offer our most beautiful holiday destinations to become the most beautiful areas to work & meet.

- Brand new Conference Centre
- Up to 100 delegates in 2 separate rooms (50 + 50)
- New Energy walls
- New interactive booths
- Healthy snacks and fresh juice
- New Coffee corners

Meeting facilities



| Conference Room | Room dimensions | Layout / Capacity | | | | |
|-----------------|-----------------|-------------------|-----------|---------|---------|---------|
| | | Boardroom | Classroom | Cluster | Theatre | U shape |
| Room #1 | 72 sqm | 30 | 40 | 32 | 50 | 30 |
| Room #2 | 74 sqm | 30 | 40 | 32 | 50 | 30 |

Equipment

- 1 LCD projector & built-in screen per room
- 1 flip chart & white board combined per room
- Note pads
- Pencils / markers
- Bottle of water
- 2 wireless microphones
- Sound system
- Energy Wall

non contractual image
For reference only



Main Theatre

- Exclusive use for Rent-a-Resort
 - For presentation of up to 250 attendees
 - Cluster group sessions / discussions
 - Large space
 - Relaxed setting with mountain views

- Main Theatre Lounge
 - Creates a relaxed ambiance during your breaks
 - Area to mingle amongst colleagues
 - The conference rooms can then be used as break-out rooms



Meeting facilities



Private Event Locations

- Haku Specialty Restaurant
- Bar Lounge



Club Med Tomamu Honeymoon Offer

All inclusive Offer*

Included

- Priority check in
- Priority at restaurant with reservation
- Late check out
- GO referent
- Premium wifi
- Lunch offered at arrival
- Gift in room at arrival
- 10% discount on Spa retailed products
- 10% discount on Boutique Club Med brand product

Premium Offer*

Price: 350€ / 2 pax

- Based on the *All-inclusive offer*
- + 1 Bottle of Champagne upon arrival
- + Couple Spa treatment: 50min – full body massage
- + Romantic diner or testing menu
- + 1 couple portrait

*Offers are subject to change without prior notice. Please check with our sales agent for the latest information.

¹Subject to village occupancy



Tomamu
Hokkaido

Club Med Tomamu Hokkaido's practical information

Location

Nakatomamu Shimukappo-Mura, Yufutsu-Gun
Hokkaido 079-2204, Japan

SEASON

Spring - March to May
Summer - June to August
Autumn - September to November
Winter - December to February

Property Information

Opened: 2017
5.9ha

Time Zone

GMT +9 hours

Arrival

Chitose International, 1h40m to the resort

Language

Japanese

Currency

The Yen

Check-in / out

Check-in: 15:00 hr
Check-out: 10:00 hr

Contact

tomccrec01@clubmed.com

Rooms

340 rooms
263 Superior (38 to 84 sqm), 13 Deluxe (38 sqm),
27 Suite (55 to 72 sqm)
2 Mobility access rooms

Getting to the Resort

Air package (flight and accommodation):
Round transfer included
Accommodation only: transfers are available at extra cost
Meeting point for transfer: airport arrival gate

Restaurants

- Itara
- Haku

Bars

- Unkai
- The Nest



Tomamu
Hokkaido

Club Med 
worldwide resorts
all-inclusive experiences

Club Med Disclaimer : the details quotes in this document were correct at the time of publication but subject to change. Document publication date : 06/10/2019. Club med strives to provide photographs and illustrations that allow the client to have an overview of the services and facilities offered

Discover more about Club Med Tomamu
Hokkaido

  www.clubmed.com

ClubmedTomamu

Discover more about Club Med resort

Download our app



Club Med Resorts